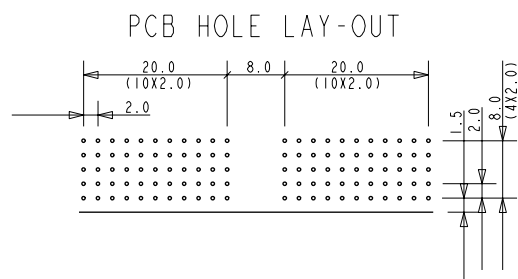
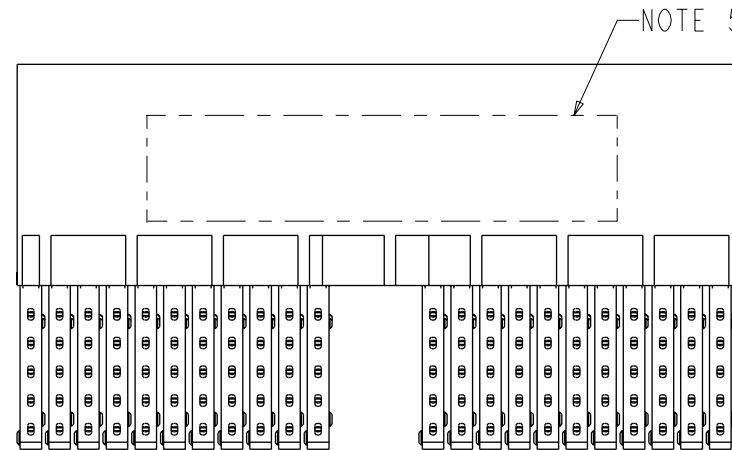
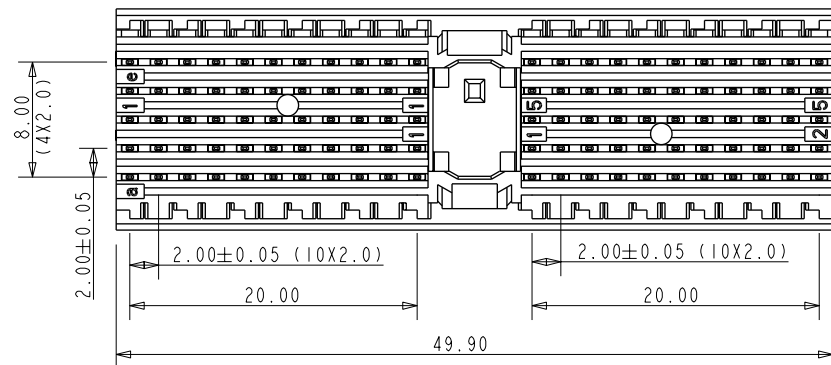
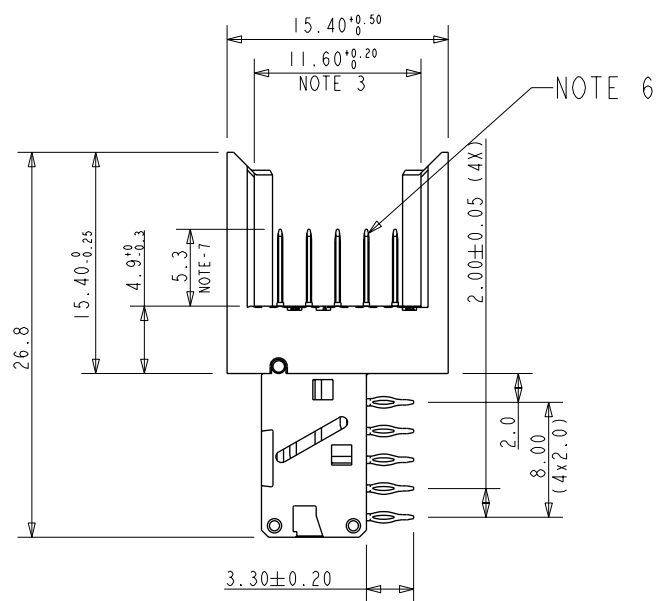




Copyright FCI.



PERFORMANCE CHARACTERISTICS :

CURRENT RATING : 1.5A AT 20°C (FULLY LOADED)
 1A AT 70°C (FULLY LOADED)
 RATED VOLTAGE : 500V AC (CONT / CONT)
 OPERATING TEMPERATURE : -55°C TO 125°C
 CONTACT RESISTANCE : 25mΩ MAX.
 INSERTION FORCE : 0.75 N MAX / CONT
 EXTRACTION FORCE : 0.15 N MIN / CONT
 INSULATION RESISTANCE : 10⁴ MΩ MIN.

NOTES :

1. CSA CERTIFIED, FILE NUMBER LR 44961-51.
2. UL APPROVED, FILE NUMBER E31151.
3. MEASURED AT THE BOTTOM.
4. MATERIAL CONTACT : PHOSPHORBRONZE.
HOUSING : LCP 30% GLASS-FILLED.
5. CONNECTOR PRINTED WITH P/N AND DATE CODES.
6. FOR ACTUAL CONTACT LOADINGS, SEE LOADING PATTERN MATING SIDE.)
7. 4 = LEVEL 1 (5.30)
5 = LEVEL 2 (6.80)
6 = LEVEL 3 (8.30)
8. 'HM2J07PE5110' LEAD FREE INDICATOR : LF = LEAD FREE
PERFORMANCE LEVEL INDICATOR (Ref DWG No BS,C ,201844,003)
9. FOR RECOMMENDED PTH DIMENSIONS REFER DRAWING : BS,A ,201572,001
10. THIS PRODUCT (LF) MEETS EUROPEAN UNION DIRECTIVES AND OTHER COUNTRY REGULATIONS AS DESCRIBED IN GS-22-008

rev	ecn no	dr	date
A	CONV R0	GNV	2002-08-28
B	EC B20190	MF	2002-11-20
C	105-0108	AB	2005-06-30
D	106-0107	AB	2006-07-12
E	108-0050	AB	2008-04-24
-	-	-	-
-	-	-	-

www.fciconnect.com		surface - ✓ ISO 1302	tolerance std ISO 406 ISO 1101	projection 	mm
TOLERANCES UNLESS OTHERWISE SPECIFIED					
Dr	N.Otto	2000-04-28	ANGULAR	0.X ±0.2	size A3
Eng	N.Otto	2000-04-28	LINEAR	0.XX ±0.1	Scale 1/1
Chr	Alex Babu	2008-04-24	0° ±1°	0.XXX ±0.05	ECN 108-0050
Appr	Alex Babu	2008-04-24	Product family	MILLIPACS	Spec ref -
FCI logo				title MPACS RA HDR	Rev. E
				type A, not shielded	dwg no BSC202767008
				catalog no HM2J07PE5110----	CUSTOMER COPY sheet 1 of 1